

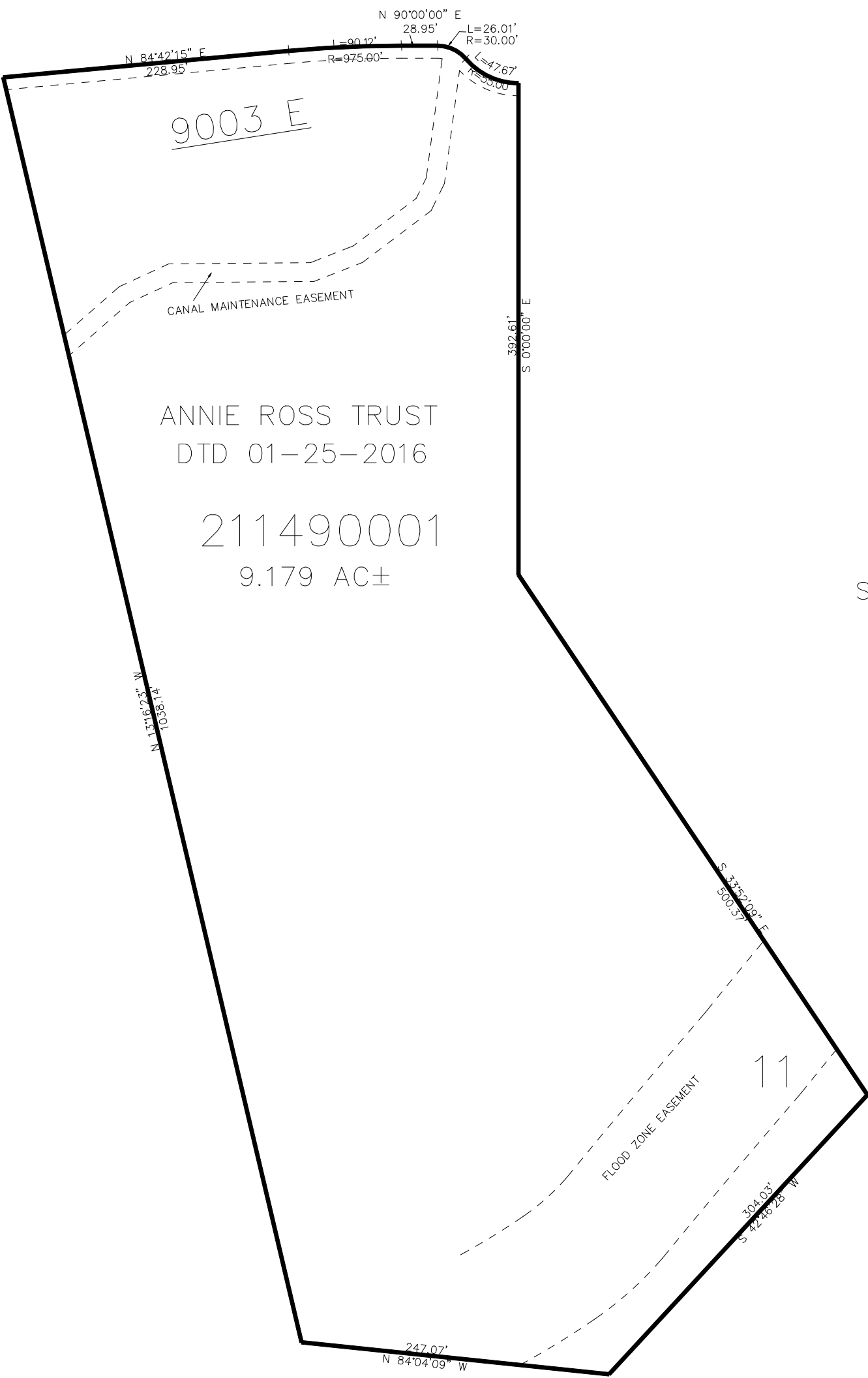
PART OF THE NW. 1/4, OF SECTION 21, T.6N., R.2E., S.L.B. & M.
RIVER RANCH 1ST AMENDMENT

149

TAXING UNIT: 520

IN WEBER COUNTY
SCALE 1" = 100'

EAGLE WAY



SEE PAGE 97

SEE PAGE 97

10' UTILITY & DRAINAGE EASEMENTS EACH
SIDE OF PROPERTY LINES AS INDICATED
BY DASHED LINES EXCEPT AS OTHERWISE
SHOWN.

FOR COMPLETE ENG DATA SEE
ORIGINAL DEDICATION PLAT IN
BOOK 82, PAGE 27 OF RECORDS.